



# Einstein News

Einstein Middle School  
19343 3rd Ave NW  
Shoreline, WA 98177  
206.393.4730  
<http://schools.shorelineschools.org/einstein/>  
Einstein Middle School PTSA 6.12.75  
PTSA Website

April 2014  
Volume VI, Issue 8

## In This Issue

Click to go to Page

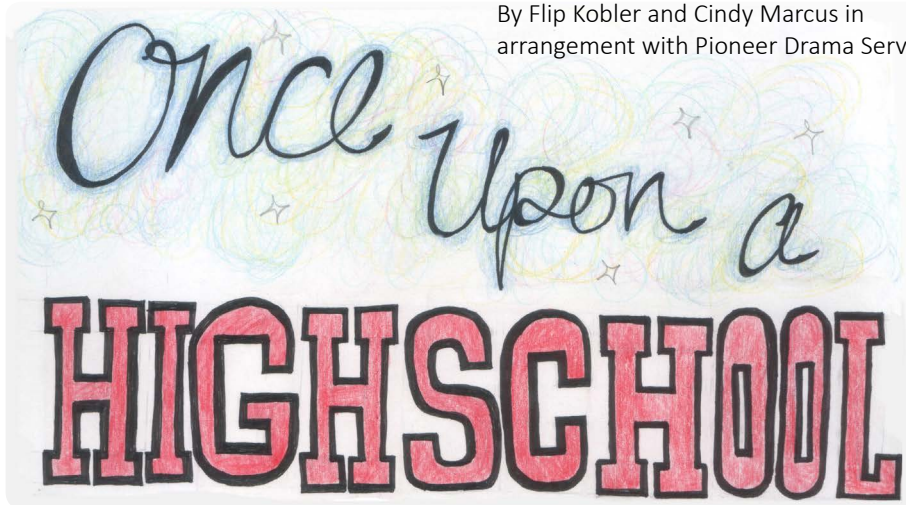
- 2 Drama Club
- 3 Activities
- 4 College Field Trip
- 5 Principal's Page
- 6 Students of the Trimester
- 7 PTSA
- 8 PTSA Membership
- 9 News
- 10 French Class
- 11 6th Grade Visit
- 12 Library
- 13 Health
- 14 Music Notes
- 15 Sports
- 16 Choir Festival
- 17 Community
- 18 Calendar

"Everybody is a genius. But if you judge a fish by its ability to climb a tree, it will live its whole life believing that it is stupid."

Albert Einstein

## Einstein Drama Club Presents

By Flip Kobler and Cindy Marcus in  
arrangement with Pioneer Drama Service



When: April 16 & 17: 7:00 pm  
Where: Shorewood HS Theater  
Tickets: \$5- available at the door

The drama club will be presenting **Once Upon a High School**. Your favorite fairy-tale characters have their world turned upside down as they get a fresh taste of reality!

*Poster graphic created by Mia Van Inwegen*

... cont'd page 2

## Spring Open House

Celebrate Einstein PRIDE and the Spring Open House! At 6:30 PM there will be a brief general PTSA meeting, cupcakes and a jazz performance. From 7:00 – 8:00 PM there will be opportunities to meet and greet the teachers and view an interactive art exhibit. All families are encouraged to attend!

Don't miss the "Wishing Party" – Interactive Public Art Project in the SAC during the Open House. The event is being hosted by Einstein Art students, and all Einstein students and families are invited.

When: Thurs, April 3rd, 6:30-8:00 PM  
Where: EMS SAC and Library





Cast of Once Upon a High School

### ... Once Upon a High School cont'd

When a portal is opened to another world, Cinderella's stepsisters take the leap and find themselves in a very real high school. While they seem to fit in perfectly in this world where mean girls are cool, crossing over into reality has serious consequences for the fantasy world they left behind. The Woodsman, who dreams of being more than just an incidental character without even a name, sets out to be the hero who brings them home. The Woodsman seeks help from high school student Danica, a hard-core realist who never believed in fairy tales. Meanwhile, as harsh reality seeps into the fairy tales, the characters are forced to break free of their patterns and learn to take charge of their own destiny. You'll love this complex, rich tapestry of enchanted fun woven with a poignant, meaningful thread about what it means to be alive and in control of your own destiny.

When: April 16 & 17: 7:00 pm

Where: Shorewood High School Theater

Tickets: \$5- available at the door. Box office and doors open at 6:30 pm



Shorewood High School Spring play

## Student Support Team

7th Grade Counselor

Kelley Flatters  
206-393-4744

8th Grade Counselor

Vollie Berry & Lauren Lochner  
206-393-4744

School Psychologist

Kathryn Zwack  
206-393-4745

Drug/Alcohol Interventionist

Devin Rodger (Wed & Thurs)  
206-393-4736

School Nurse

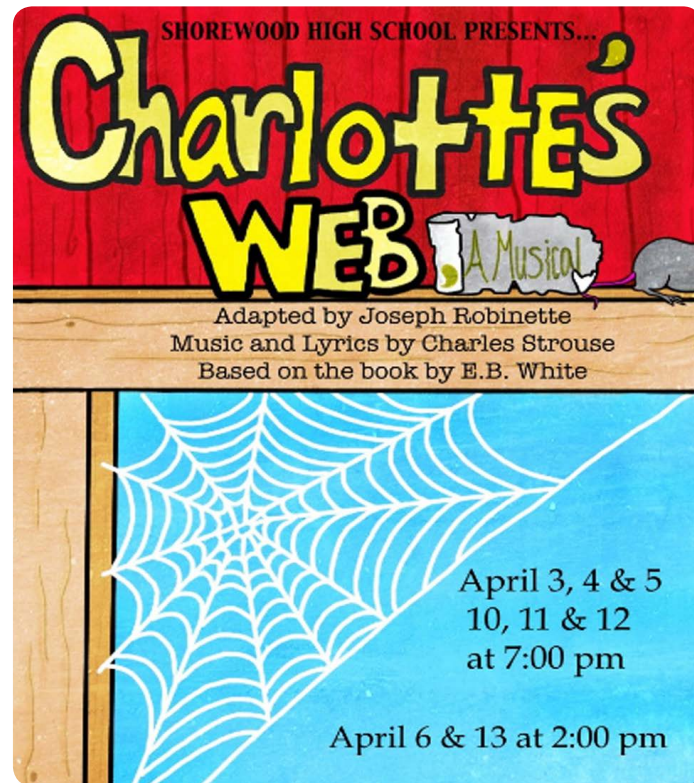
Joni Wishaar  
206-393-4734

Security Monitor

Liz Aspen  
206-393-4738

Center for Human Services On-Site

Counselors  
Aileen Loranger  
Linda Fieldhouse  
206-631-8820



## Yearbook Sales

The final yearbook sales event of the year will be held April 8-18. There is a very limited number still available. Don't be disappointed in June! If you still need to purchase one, you can do so in the office before or after school, or during lunch. Cost: \$25 with ASB card or \$30 without ASB card.

If you are interested in starting an after school club, you need: An advisor who is willing to supervise and guide your club on Tuesdays, Wednesdays or Thursdays, and approximately 10 students who are interested in joining your club. Talk to your PRIDE teacher, your counselor or an administrator if you need assistance.



**8th Graders tour the University of Washington campus.**





## Principal Clark's *Comments*

### Einstein PRIDE - Spring Open House - April 3rd

Einstein staff and students will showcase their work and celebrate Einstein PRIDE at the annual Spring Open House, Thursday April 3 at 6:30 to 8:00 PM. All 7th and 8th grade students and their families are encouraged to join us for an evening of celebrations, performances, and conversations. The program begins at 6:30PM in the cafeteria. Following the Golden Acorn/Apple Award Presentations and a short general PTSA meeting you are welcome to stay in the Cafeteria for Cupcakes, Jazz and a Choral Concert. We also encourage parents and students to mix and mingle with student's teachers and participate in a "Wishing Party" with our student artists in the SAC, Library and in the Science Room B-8. The library will be hosting a book fair.

Be part of the amazing PTSA and bake or purchase cupcakes for the event. The goal is to have 500 cupcakes to consume that evening. The event is fun and casual. If you would like to contribute 2 dozen cupcakes contact Jennifer Gettman (see Volunteer box to the right.) You can drop them off in the main office on April 3. We hope you are able to spend some of your time at this fun event.

### Einstein MSP testing in Early May - Save the Date: May 6th, 7th, 8th and 9th.

Statewide, all students in 7th and 8th grade will take the Measurement of Student Progress (MSP) during the month of May. Seventh grade students will take the tests in reading, mathematics and writing; while the 8th grade students will take tests in reading, mathematics and science. Einstein students will take the tests on the mornings of May 6th, 7th, 8th and 9th. We would appreciate it if you would schedule appointments around these required tests

More information about testing tips will come out next month.

Stephanie Clark

### Volunteer Opportunities

Sign up [HERE](#) for volunteer help on campus! Following are two of the volunteer tasks needed in April:

- If you have a few extra minutes and would like to help the school by running copies for the teachers, please contact [Leslie Buchanan](#) with your availability so she can have work waiting for you!
- Can you believe it is already time to prepare for the Einstein Open House? **This year the event will be on 4/3 and we need 500 cupcakes!!** Please sign up here to donate food or to help with set up/hosting/clean up. Contact event coordinator [Jennifer Gettman](#) with questions.



**Don't forget!**  
**MSP Testing!**  
**May 6, 7, 8 & 9th.**



## Students of the Trimester

Congratulations to the following students who were selected as students of the second trimester.

### 7th grade

Arianna Gregory  
Charles Case  
Cindy Nguyen  
Connolly Grady  
Edwin Montiel  
Grace Borich  
Hai-Ying Aw  
Heran Gessesse  
Jessica Hwee  
Maxime Fenalson  
Murad Atayev  
Sarah Barrett  
Sebastian Strauss  
Timony Sherry  
Zeke Rogers



### 8th grade:

Athena Jones  
Carolyn Fenske  
Eli Fish  
Elric Hennessy  
Grace Park  
Hailey Hedberg  
Kailani Jacobsen  
Kyle Pozarski  
Lily Apple  
Maddie Anderson  
Miriam Bandala  
Monty Morawan  
Nagasa Beyene  
Olivia Stiens  
Praman White  
Roaa Al-Yaseri  
Samarawit Bereket  
Sarah Jhingan





## PTSA Board 2013-2014

### Co-Presidents

Lori Ramsay & Jamie Kirkwood  
einsteinpresident@gmail.com

### Secretary

Janina Pacunski  
einsteinsecretary@gmail.com

### Treasurer

Craig Yamane  
einstein treasurer@gmail.com

### Legislation

Melanie Gillespie  
einsteinlegislation@gmail.com

### Membership

Ania Babcock & Kathy Tinoco  
einsteinmembership@gmail.com

### Newsletter

Mary Lynn Antush & Diana Nielsen  
einsteinmiddleschoolnews@gmail.com

### Public Affairs

Dixie Taira & Beth Paul  
einsteinpublicaffairs@gmail.com

### Reflections

Diana Ensenat

### S is for Student

Carrie Campbell

### Site Council

Maria Ales & Mandi Counter  
einstein sitecouncil@gmail.com

### Student Affairs VPs

Sherry Edwards & Renee Smith  
einstein studentaffairs@gmail.com

### Volunteer Coordinator

Allison Taylor  
einsteinvolunteers@gmail.com

### Ways & Means VP

Reiko Shigemoto  
einsteinwaysandmeans@gmail.com

### Website

Jim Eaton  
einsteinwebsite@gmail.com

### Nominations

Tracey Poole, Carrie Campbell, Kelly Williams, Craig Yamane  
einstein nominations@gmail.com

## PTSA President's Message

Lori Ramsay and Jamie Kirkwood

### *Spring Is Here!*



April showers bring May flowers! So, you know what that means....Summer is near. As we enjoy the last trimester, don't forget to take the time and enjoy all the hard work you and your students have put in this school year. I know this PTSA and its volunteers have worked hard on many projects and it's shown. You have all responded so graciously when each volunteer need has arisen. So, thank you for making this Einstein PTSA great!

As always, everyone is welcome to attend the PTSA meetings. They are always filled with excitement and great information about what is going on at your child's school. Our next one is May 13th at 6:30pm in the Einstein staff lounge.

We are looking forward to what we can accomplish together as the summer nears!

## Shoreline Special Needs PTSA

The Shoreline Special Needs PTSA works to foster communication and collaboration among parents, students, teachers, schools and the community to support students with special needs. Their next meeting is April 17, and the Alumni Room at the Shoreline Center.

## Open PTSA Positions

Your Einstein PTSA needs you! There are a lot of open positions for the 2014-15 school year, some of which are required for the PTSA to continue. If you can spare time for meetings once a month (twice for President), and you like to be in the "know" about school and school district activities, consider an executive position such as President, Secretary, Student Affairs (VP) or Ways and Means (VP). If you don't have time for meetings every month but are willing to help out consider a smaller role: Public Affairs Director, Legislative, Site Council Director (7th Grade), Watch D.O.G.S. Coordinator, Membership Outreach, Embrace Einstein. Contact your PTSA at [einsteinpresident@gmail.com](mailto:einsteinpresident@gmail.com). Thank you for your continued support!

## PTSA Meetings

- Thursday, April 3rd @ 6:30 PM – Cafeteria (followed by open house activities)
- Tuesday, May 13th @ 6:30 PM – Staff lounge

Please join us! If you have questions, please contact Janina Pacunski at [einsteinsecretary@gmail.com](mailto:einsteinsecretary@gmail.com)



## Thank you! Extraordinary Chefs, Bakers and Volunteers!

### Staff Appreciation Luncheon:

Thank you to all the volunteers who contributed salads, soups and stews, assorted breads, desserts, and drinks to our teacher luncheon on February 28. The food was wonderful, and much appreciated.

### Student of the Trimester Breakfast:

Thank you to all our wonderful volunteers who contributed all the delicious baked goods, drinks, and time rewarding some of our amazing students March 14th.

## Reflections:

Congratulations to Forrest Neander! Forrest won the Award of Excellence for his piece "Racing" at the Reflections 2013-14, WA Statewide Competition.

Next year's theme is "The world would be a better place if..." Start thinking about your entry now and over the summer, the deadlines for the artwork come quickly in the fall. We hope all artists, painters, videographers, and musicians will consider contributing a piece next year.

## PTSA Membership

Reiko Shigemoto, Ways & Means, and Ania Babcock, Membership Coordinator

The Einstein PTSA is at the center of a unique, close-knit community where each one of us makes a difference. By joining the PTSA, your membership dues make it possible to supply our students and families with fun, educational activities and other events that enhance the educational experience, while promoting school spirit and civic responsibility. Please show your support today!

Use the Membership form on page 6 or use the form found on the Einstein PTSA website [Join Einstein PTSA](#). Membership forms can be dropped off at school, sent in with your student, or mailed to the Einstein school office anytime. Thank you for your support!

Cut here and return to Einstein PTSA via the school office:



## PTSA Membership and Pass the Hat Donation

Name(s) _____	Membership for individual \$15.00	\$ _____
Address _____	Membership for two \$25.00	\$ _____
Student's Name _____	Pass-the-Hat (your donation)	\$ _____
Student's 6th period teacher _____	Total amount in envelope	\$ _____

If you would like to receive PTA legislative updates via email, please provide your email address: \_\_\_\_\_

Membership Card(s) and Student Directory will be sent home with your student. This process changed in the 2013-14 school year.

Please make checks payable to Einstein PTSA. The Einstein PTSA is a 501(c)(3) organization. Donations are tax deductible to the extent allowed by law. To double your impact, check with your employer about matching donations. Thank you for your support! Mail to: 19343 3rd Ave NW, Shoreline, WA 98177



## Spread the Word to End the Word!

March 5th was *Spread the Word to End the Word* day. What is the word we are trying to end? It's the R-word or *retard*. Like so many other words we sometimes use thoughtlessly, this is a word that can really hurt people. Please use your words for kindness! Here's the link so you can learn more at: <http://www.r-word.org>



## FIRST ANNUAL COPA MUNDIAL!

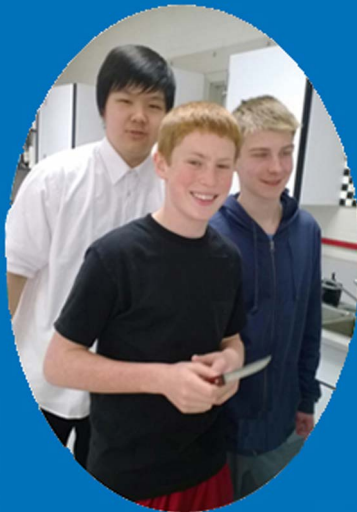
### Einstein Students compete in World Cup Soccer tournament

This year the Einstein Latino Club is hosting an after school soccer tournament: "La Copa Mundial." Students are participating in teams to play 5 on 5 tournament style games, with the winning team playing the staff! This friendly competition will be held after school on the field from 3:00-4:30 on Tuesday April 1, Wednesday April 2, and Thursday April 3. All are welcome to come and cheer on our great "fútbol" players!

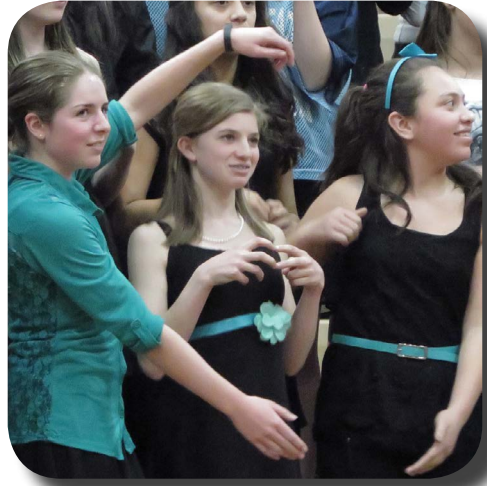


## "Guerre de Pomme de Terre et de Chou"

A potato & cabbage war to see who could create the most delicious meal in French II class!



French students promote French class electives to incoming seventh graders.



### 6th Graders get a taste of middle school-life at EMS!

6th graders saw first hand the EMS bands, orchestra, choirs and jazz band perform; they learned all about the school day schedule and the tantalizing Electives they can choose from!



Welcome new incoming 6th graders!





## LINES FROM THE LIBRARY

Anne Dame, Librarian

March was a busy month in the library! Book Club projects were due early in the month, so students were here finishing those up. Then all of the English classes came in for book talks and book passes so students could choose books for their next book club! One highlight of the book talks was spreading awareness for the Shoreline-Lake Forest Park Arts Council Edible Books Festival. I hope some of you were able to participate, either making or eating, in the festival.

In April, I am looking forward to working with the science classes on their natural disasters and technology curriculum as well as the health classes and their teen health research projects. April will also bring the delivery of two iPads for the library thanks to a very generous PTSA grant! I can't wait to use them with students for a wide variety of projects- including making a table top movie with The **WRITE Stuff** club on April 9th. In April, I will also be presenting to all the Shoreline librarians on a conference that I attended in March. It was about using technology in school library programs. To see some of the ways I have started incorporating this into my teaching, can check out my Voki on the library webpage: <http://einsteinlibrary.wordpress.com>

**BOOK FAIR:** April will continue to be full of excitement in the library as the BOOK FAIR will be here April 1-4, with special evening hours during the school Open House on Thursday, April 3rd! Some teachers (including the librarian!) have filled out wish lists for books for their classrooms. Also, we are working in collaboration with the Richmond Beach branch of KCLS to supply books for school libraries in New Orleans that are still suffering massive decimation from Hurricane Katrina. For this, you will find a special wish list for New Orleans schools. KCLS librarian Aarene Storms will coordinate with us for the transportation of the books to New Orleans. Click **HERE** for the link. Online shopping is available through April 13th. All orders will be delivered to Einstein for free. Please let me know if you have questions- or if you are available to volunteer to help run the cash register for us.

**BOOK RECOMMENDATIONS:** *Skin and Bones* by Sherry Shahan- A look at eating disorders from the viewpoint of a boy with anorexia. Jack is sent to an eating disorder unit because of his extreme weight loss and pervasive health issues.

*The League* by Thatcher Heldring- Wyatt is often picked on by bullies and he is afraid that it will only get worse if everyone discovers that his parents have signed him up for golf camp over the summer. A surprise invite from his older brother to participate in a super secret, super rough football league seems like his ticket to popularity.

*Eve & Adam* by Michael Grant & Katherine Applegate- Eve is in a horrendous car crash and is taken to the hospital. Her famous scientist mother swoops in and takes Eve to a different, very high-tech facility. Eve experiences unnaturally fast healing, so her mom says that Eve can use their new program to alleviate her boredom by creating the perfect boy.

### Thank you!

**Ms. Dame and Ms. Nelson want to send a HUGE thank you to the Shoreline Public Schools Foundation for their generous grant! We were able to purchase thirty new books for Ms. Nelson's classroom reading library. Ms. Nelson and class are definitely enjoying the new books! One way they have already put them to use is by creating podcasts based on the books while in the library with Ms. Dame.**

**Below are some pictures from Ms. Nelson's class working on podcasts based on the books we bought with money from a Shoreline Foundation grant. More pictures on page 11.**





## Health

Joni Wishaar, MBA, BSN, RN, School Nurse

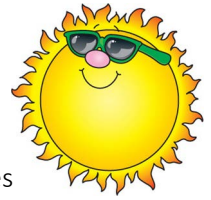
### *Sunscreens and skin cancers*

Oh the joy of the sun! After the dreary, gray winter, the warm spring and summer weather makes time in the sun a wonderful experience! But alas, along with the bright sun comes the pain of sunburns. What to do? Slather on that sunscreen and all will be well! If only it were that simple...

With the advent of sunscreens, we have spent more time outside obtaining that glorious tan and absorbing more ultraviolet radiation. Unfortunately, melanomas are on the rise. Melanoma is the most rare but most dangerous of the skin cancers. Experts are not sure exactly what is causing the increase of melanomas: an ingredient in the sunscreen or simply an increase in the time spent in the sun. Some experts believe it is the intense, intermittent exposure to sunlight such as you obtain during vacations as opposed to people like farmers who are out in the sun daily.

There are two types of ultraviolet radiation that we are concerned with: UVB and UVA radiation. UVB radiation is responsible for 75-85% of all sunburns. The tan it creates is protective against UVB induced burning. UVA causes immediate and delayed tanning. It is responsible for 15-25% of all sunburns. UVA may also suppress the immune system. This is the light that is used in tanning beds. Skin damage from UVB and UVA includes freckles, wrinkles, spider veins, dry, itchy skin, basal-cell and squamous-cell skin cancers and melanomas.

To prevent damage to skin, it is recommended that you limit the amount of time you spend outdoors at the peak sun exposure (10 AM –4PM). Wearing the maximum SPF sunscreen to block out 97% of the radiation, reapplying it every 1-2 hours, and wearing a wide brimmed hat (at least 3 inch brim) and protective, tightly woven clothing, and sunglasses also help minimize the damage caused by the sun.



... Library continued.



Books purchased with money from a Shoreline Foundation grant

More pictures from Ms. Nelson's class



## Upcoming Concert Dates

**SKMEA Middle School Solo and Ensemble Festival**  
Saturday, May 3 – all day

**Einstein Wind Ensemble, Shorewood Wind Ensemble and Shoreline Community College Band – In Concert with The President's Own Marine Band flute soloist, Ellen Dooley**

Tuesday, May 20 @ 7:30 PM, Shorewood Theater

**Einstein Spring Band Concert**

Wednesday, June 4 @ 7:30 PM, Einstein Gym

**Einstein Sprint Choir Concert**

Wednesday, June 11 @ 7:30 PM, Shorewood Theater

**Einstein Spring Orchestra Concert**

Thursday, June 12 @ 7:30 PM, Shorewood Theater

## Did You Know?

In a March 10, 2014 Chronicle of Higher Education article entitled "Who Knew? Arts Education Fuels the Economy", Sunil Iyengar and Ayanna Hudson speak about the impact that arts education has on the economy:

"... The Partnership for 21st-Century Skills, a coalition of business and education leaders and policy makers, found, for example, that education in dance, theater, music, and the visual arts helps instill the curiosity, creativity, imagination, and capacity for evaluation that are perceived as vital to a productive U.S. work force. And the Conference Board, an international business-research organization, polled employers and school superintendents, finding that creative problem-solving and communications are deemed important by both groups for an innovative work force. Additionally, IBM, in a 2010 report based on face-to-face interviews with more than 1,500 CEOs worldwide, concluded that "creativity trumps other leadership characteristics" in an era of relentless complexity and disruptive change."

The remaining portion of the excerpt of the article below can be found at: <http://chronicle.com/article/Who-Knew-Arts-Education-Fuels/145217/>





### 8th Grade Girls Basketball

The 13 athletes selected for this year's 8th grade girls basketball team have been working hard to build a strong team. With the leadership of eight returning players and a strong commitment to strengthening fundamentals, the five new players have improved rapidly in order to become critical components of the team's success.

The Tigers ended the season with a 9-1 record. Thanks to all the fans and players for their efforts and support this season!



### 7th Grade Girls Basketball

The Einstein 7th Grade Girls Basketball team has had an outstanding season with a 9-1 record! Their only loss was to undefeated Gateway Middle School. The Tigers are at their best when they pressure other teams defensively, forcing turnovers that lead to quick fast-break baskets. Congratulations on a great season!

Here is a pic of some of the girls and their biggest fans who came to support them at last weeks game versus College Place!



### Track begins April 8th!

Einstein's track team is traditionally the sports season with the largest number of students turning out. If your student is considering turning out for track, please encourage her or him to do so! It's a great way to meet new people, learn new skills, and have a lot of fun with a wide array of Einstein students.

If your student plans to turn out, please make sure that all paperwork has been turned in and that the athletic fee has been paid. You can find information and registration forms on the Einstein website under Athletics. The schedule for this season is posted to help you plan ahead for meets and practices. Go Tigers!





# Westside 6th Grade Honor Choir Festival

March 6th at Shorewood High



## Participating Choirs:

- Sixth Grade Honor Choir
- Shorewood High School After Hours Jazz Choir
- Shorewood High Treble Choir
- Shorewood High Aeolian Choir
- Einstein Mixed Choir
- Einstein Concert Choir
- Combined District Choirs

## Thanks to participating Music Teachers and Choir Directors:

John Hendrix, Shorewood HS  
Janet Allison, Einstein MS  
David Ferguson, Einstein MS Intern  
Nadine Santo-Pietro, Echo Lake  
Barbara Dreier, Highland Terrace  
Shari Anderson, Meridian Park  
Carl Yost, Parkwood  
Janet Allison, Syre





Please note: Community activities and events are included as a service to our families and students. These activities are NOT sponsored by the School District and the District assumes no responsibility for conduct or safety of the activities.

## TeenTix

TeenTix entitles 13-19 year-olds to a free pass, which entitles them to \$5 day-of tickets to many major live theater venues in our area. Click [HERE](#) for a calendar of events. For more information, go to their website: [www.teentix.org](http://www.teentix.org)

## Test Drive 4 Kids

When Campbell Nelson Volkswagen Nissan says they're "Community Driven", they mean more than their cars are being driven by our friends and neighbors. Campbell Nelson is committed to giving back to the community, and on January 1, 2014, Campbell Nelson pledged up to \$80,000 to four local non-profits to help enrich the lives of our local youth.

Help the Shoreline Public Schools Foundation promote learning and support students: Test drive a new car at Campbell Nelson today and they will donate \$50! Program runs **January 1st, to April 30th, 2014.** Limit of one donation per household. Customer must agree to have their mailing address given to one of the participating non-profits.



## College Bound Scholarship Program

The College Bound Scholarship program encourages low-income, middle school students to choose a path that will lead to educational success after high school. The program promises tuition (at public institution rates) and a small book allowance for [income eligible](#) students who sign up in the 7th or 8th grade, work hard in school, stay out of legal trouble, and successfully apply to a higher education institution when they graduate. Students may sign up in the 7th or 8th grade, and need only apply once. The deadline for all applicants is by June 30 at the end of their 8th grade year. Visit the [College Bound](#) website for more information.

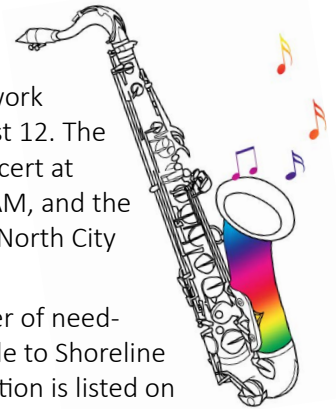


## Jazz Camp 2014

The mission of the Shoreline Jazz Camp is to provide young musicians the opportunity to learn and play with some of the region's most accomplished teachers and performers. Our program creates a safe and structured learning environment, in which students of varying skill levels are able to share in the joy of playing jazz. The camp includes instruction in large and small ensembles, and a series of master classes that are designed to refine the individual's skills and understanding of jazz. This program is open to students in 7th grade and above. The registration deadline is July 11, 2014. Cost: \$300. August 4- 8 and 11 & 12, 2014, Monday-Friday, 9 am-1 pm, Shorecrest High School. Camp registration forms are available [HERE](#).

**Performances.** The camp will showcase the students' hard work in two performances on August 12. The first will be a late morning concert at Shorecrest High School at 11 AM, and the second at 7 PM at Shoreline's North City Jazz Walk.

**Scholarships.** A limited number of need-based scholarships are available to Shoreline students. [Scholarship](#) information is listed on our website.



## A Parent's Role in Prevention: Teen Marijuana, Alcohol & Other Drug Use

Seattle Children's Hospital- Adolescent Medicine- presents a free workshop for parents, staff, students and community. Dr. Yolanda Evans will talk about healthy adolescent development, how marijuana and other drugs affect brain development, and what parents can do to prevent drug use among their children. Tuesday, April 29 at the Shoreline Center. Doors open at 6:30; speaker begins at 7:00. Public and private agencies will have materials available before and after the presentation.



# April 2014

## April

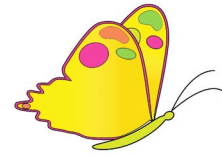
4/3	THUR	Spring Open House, 6:30 – 8:00 PM, Cafeteria & SAC
4/7	MON	No School
4/16	WED	Spring Play: Once Upon a High School, Shorewood Theater
4/17	THUR	Spring Plan: Once Upon a High School, Shorewood Theater
4/17	THUR	Private School Tours

**4/21-25 No School – Spring Break**

Information about clubs and other extracurricular activities can be found on the [Activities Page](#) of the website. Students participating in after school clubs or athletics are eligible to take the Activity Bus on Tuesday, Wednesday & Thursday.

## Activity Bus

4:30 PM	Bus parks in front of Einstein gymnasium
4:45 PM	Depart Einstein
4:50 PM	Richmond Beach Library
4:58 PM	Shorewood High School
5:04 PM	Highland Terrace Elementary
5:11 PM	Parkwood Elementary
5:18 PM	Meridian Park Elementary
5:22 PM	Echo Lake Elementary
5:26 PM	Dale Turner YMCA
5:32 PM	Shoreline Center



## Lunch Menu

Here is a link to the Middle School [Lunch Menus](#)  
**be'te-avon!**

## Athletic Schedule

Here is a link to the [Spring Sports](#) Schedule.

